

# Frodsham Life

**FREE EVERY MONTH**

Issue No. 163  
October 2018

*D.R.B. Jewellers*

See our  
main advert  
on page 3

**01928 731675**

**COVERING: FRODSHAM • HELSBY • KINGSLEY • NORLEY • ALVANLEY & SURROUNDING PARISHES**



**Pride and Prejudice**

Page 3

**For the latest news updates, visit [frodshamlife.co.uk](http://frodshamlife.co.uk)**

**Editor**  
Gary Skentelbery

**Production**  
Paul Walker

**Advertising**  
James Balme

**Telephone**  
01928 761045  
Sales: option 1  
Editorial: option 2  
Artwork: option 3  
Accounts: option 4  
General Enquiries: option 0

**Email**  
info@frodshamlife.co.uk

**Websites**  
www.culchethlife.com  
www.frodshamlife.co.uk  
www.lymmlife.co.uk  
www.warrington.tv  
www.warrington-worldwide.co.uk

**Address**  
New Media Centre  
Old Road Warrington  
WA4 1AT

**Frodsham Life** is  
published monthly by  
Orbit News Ltd.

The contents of this magazine  
are fully protected by copyright  
and nothing may be reprinted  
or reproduced without prior  
permission of the publishers.

The publishers are not liable for  
any statement made or opinion  
expressed by third parties in this  
publication.

Printed by TwentyFourSeven

# Editor's Comment



**FEW, if any, issues have provoked so much comment in Frodsham in recent years as the Goods Shed, and for this reason we hesitate to bring it up again in this column.**

In fact, in a sense, we are not doing. We said a couple of months back that it was not our place to take sides in the debate and that remains our position.

But another issue sits alongside the Goods Shed. Almost literally!

We refer to the Household Waste site which for many years has presented a not too favourable first impression of Frodsham to visitors arriving by rail. Everyone agrees it is in the wrong place. Everyone agrees it is essential the town has one.

The question is: Where does it go if it doesn't stay where it is?

Years ago, a Cheshire West and Chester official "helpfully" expressed the view that it either stayed where it is or we didn't have one at all. Not much of a choice!

The Town Council's planning committee, alongside a strong objection to the plan to demolish the Goods Shed, has also objected to CW&C's proposal to extend the temporary planning consent for the waste site for five years.

They want the permission extended by just one year, in the hope that such a timescale might persuade CW&C to intensify what has so far been a less than enthusiastic search for an alternative site. We think this a

good idea, but we hold out little hope that it will achieve its aim.

The Town Council has suggested "low grade" land in the Green Belt should be considered, although they haven't gone as far as suggesting where that might be found.

We have heard Mill Lane suggested, but how well that would go down with the residents and businesses in Mill Lane, we cannot pretend to know!

However, if somewhere could be found, whether or not on low-grade land in the Green Belt, it would go a long way towards solving the conundrum over the Goods Shed. Extra parking could be found near

the station without demolishing an old building that could undoubtedly still have life in it, thus nullifying one of the arguments of the pro-demolition lobby.

We hope that won't be seen as taking sides!

**Deadline for the  
November  
issue of  
Frodsham Life  
is October 23**

## JPW Body Repairs

### ACCIDENT & BODY REPAIR SPECIALIST

- 30 Year Experience
- Quality Plastic Bumper Repairs
- Perfect Colour Matching
- Courtesy Cars Available
- All Major & Minor Work Undertaken
- Collection & Delivery
- Oven Bake Finish For All Vehicle Repairs
- Free Mini Valet

**Tel: 01928 787887** [www.jpwbodysrepairs.co.uk](http://www.jpwbodysrepairs.co.uk)  
Meeting House Lane, Kingsley WA6 6TP

Is this  
familiar?



**NEW**

# SHORT ON SPACE?

Get storage with

# 50% OFF

T&C's Apply

## RUNCORN'S BIGGEST & MOST SECURE SELFSTORE

Fully secure with 24/7 CCTV security  
You are the only key holder  
Domestic and commercial storage  
Full packaging materials available  
Free parking & free trolley use



**GET A QUOTE**

**01928 620332**

[www.handselfstore.co.uk](http://www.handselfstore.co.uk)



Unit 6 Ashville Industrial Estate, Ashville Way, Sutton Weaver, WA7 3EZ

# Kingsley Players back on stage with 'Pride and Prejudice'

**AWARD-winning Kingsley Players return in October with a special stage adaptation of Jane Austen's ever popular 19th century novel 'Pride and Prejudice'.**

Regency England, in all its finery, will be recreated on stage at Kingsley Community Centre for five performances from Wednesday 17th – Saturday 20th October.

Join the theatre group for a thrilling gavotte of manners and morality, as we follow the much-loved story of the Bennet family and their preoccupation with finding husbands for their five daughters.

Mr Darcy (Brandon Chadwick) is sure to set hearts racing as he woos

Elizabeth Bennet (Laura Bason) with encouragement of Mr and Mrs Bennet, played by Kingsley stalwarts Malcolm Barker and Sue Elliott.

Kelly White, making her directorial debut in Kingsley, said: "I love Jane Austen's novels, her wit, humour, social commentary and irony. You don't often see it on stage so I was over the moon to find this production that stays true to Austen's use of language.

Audiences never tire of watching Darcy & Elizabeth fall in love and I am sure they will enjoy it this time too".

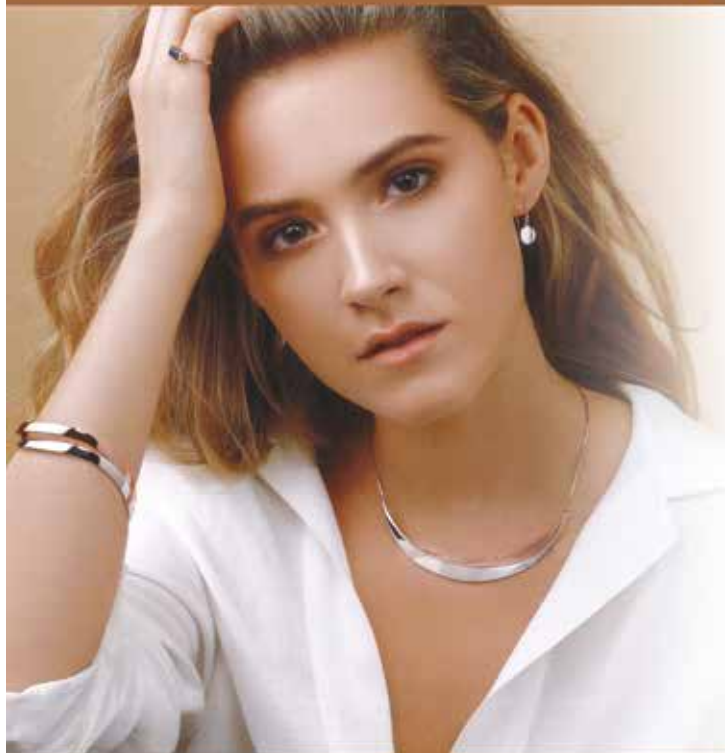
Pride and Prejudice will play for five performances at Kingsley Community Centre, Wednesday 17th – Saturday 20th October, 2018, 7.30pm, including a

Saturday matinee at 2.30pm.

Tickets cost £7/£8, with £5 concessions available on Wednesday, Thursday and Saturday matinee. Book in advance through the website [www.kingsleyplayers.co.uk](http://www.kingsleyplayers.co.uk) or by ringing the box office on 07724 892154.



## D.R.B. Jewellers



FIORELLI  
JEWELLERY  
SILVER COLLECTION

25 Church Street, Frodsham, WA6 6PN

01928 731675

# New Co-op opens – creating up to five new jobs

**THE Co-op has served-up a new food store and Post Office in Kingsley, following a £650,000 investment creating up to five new jobs.**

The store has relocated from The Cross, to Hollow Lane, more than doubling in size to enhance the service to the community.

In addition to the retention of Post Office services, a range of services will also be available over the counter outside of the Post Office's usual hours – making a selection of Post Office services available for an additional 64 hours each week.

The store will open between 7am-10pm daily, offering customer car parking, an in-store bakery, hot food, and a Costa coffee dispenser, alongside its focus on fresh healthy foods, meal ideas, award winning wines and essentials.

A funding boost is also on the "cards" at the store for local causes through the Co-op's Membership scheme - Members receive a 5 per

cent reward on the purchase of own-brand products and services, with the Co-op donating a further 1 per cent to local causes such as the Kingsley and Newton Village Institute; Owley Wood Scouts and Guides and the Weaverham Community Centre.

Store manager Tim Gardner said: "We are delighted to have the opportunity to carry out such significant investment in Kingsley. It is exciting to have such a great looking store, and enhanced offer, in order to better serve our

community. Our ambition is always to ensure our store is a local hub, a real asset locally, offering what our members and customers want, conveniently."

Area manager Paul Willcox added: "We are investing in our people, stores, products, prices and communities – our aim is for our store to be at the heart of local life, bringing communities together and offering great quality products, when and where our members and customers need them."



## Gold award for high school

HELSEBY High School has been awarded the Inspiring IAG Gold award for Careers Education Information Advice and Guidance.

The award, which recognises quality provision in schools for careers information, advice and guidance is available to all schools, with only the best receiving the Gold.

It has been designed to enable organisations who work with young people to not only deliver and be recognised for good quality careers education, information, advice and guidance, but to also assist them to meet legislation, prepare for inspection and provide a better service. It

is awarded by Inspiring IAG which is a licensed awarding body for the national award.

Inspectors commented that Helsby High School "seeks to raise aspirations and develop those essential skills needed in careers and life. There is a real sense of links with the community and partnerships with a wide range of providers, including employers."

Inspiring IAG is a national provider licensed to deliver The Quality in Careers Standard Award.



**PRIESTLEY**  
COLLEGE  
WARRINGTON



## OPEN EVENTS

WED 10 OCT	5:30pm - 8:00pm
THU 11 OCT	5:30pm - 8:00pm
SAT 3 NOV	10:30am - 12:30pm
WED 22 NOV	5:30pm - 8:00pm

for ENROLMENT Sept 2019

01925 633591    [www.priestley.ac.uk](http://www.priestley.ac.uk)

### REASONS TO CHOOSE PRIESTLEY IN 2018 / 2019

- Consistent excellent record in both academic and vocational subjects
- Choose from 70 courses that now include subjects as diverse as Criminology and Architecture
- Sign up to our Category 3 Rugby Academy, which is being run in partnership with Warrington Wolves
- Priestley students progress to top university and apprenticeship places as well as employment

# The bad, worse and some great news

By Councillors Andrew Dawson and Lynn Riley



## Parking restrictions for Main Street

CWaC has published its maps setting out the parking restrictions for Main Street. Basically parking on Main Street will be restricted to 2 hours – unless you are the holder of resident permit. Up to 126 residents' permits will be available on a one-per household basis for those living on Main Street. The permits will cost £60 per year per vehicle. Those with two or more vehicles in the household will have to wait until every household that wants a permit, has received one.

If you drive along Main Street in the middle of the night you'll see that close on two-thirds of all the spaces are full. We don't believe CWaC has properly assessed the economic impact of these proposals nor considered the effect of them on our increasingly older population that is more dependent on car travel.

## CWaC's New Chief Executive comes to Frodsham

We gave CWaC's new Chief Executive a tour of Frodsham. Some of highs and lows included Castle Park, the dreadful state of our roads with Ashton Drive and Howey Lane receiving special mention and everything that is or is not happening at Frodsham Station. We had a very successful meeting with the Chief Executive and those wishing to make the Goods Shed a performance venue. This has led to CWaC delaying its planning application to demolish the Goods Shed. We also pushed on the Chief Executive the need to look into creating a second deck for car parking at the far end of the Station Car Park – something we've been calling for ever since the re-opening of the Halton Curve was announced. CWaC officers are looking into the feasibility of doing so. We now want CWaC to commit the money to bring this about. Ironically most of it could be paid for by the latest announced underspend of more than £1m.

## Air pollution

We took the new Chief Executive to our Air Quality Management Area and pointed out how CWaC was now late in making any changes to improve air quality. We know we need a radical re-think of traffic management along the A56. We need to keep traffic moving – not standing still putting out fumes. We have asked repeatedly for the phasing of the lights at the Bear's Paw to be changed.

## Halton Curve

The opening of the Halton Curve has been delayed until May 2019 because of a shortage of rolling stock. There aren't the trains to run the service.

## Household Waste Recycling Centre

The recycling centre is, in planning terms, a 'non-conforming use. This means whilst it has been given temporary planning permission CWaC accepts it really shouldn't be at the station car park. The latest temporary permission has expired and CWaC want to renew it for another 5 years. Having supported the temporary permission for so long the time has come to say this state of affairs has to be changed especially with the pressures on car parking.

Following discussions with us CWaC will now propose a 3 year

temporary permission – with the expiry co-inciding with CWaC looking to let its next waste contract and formulate its new waste management strategy. We have been clear with CWaC that Frodsham residents need easy access to a recycling site – so simply closing the one at the Station without giving us a new site is not an option. We suggested that the new Chief Executive examine whether a new site could be constructed along Mill Lane.

## Leisure facilities

Frodsham needs significant investment in its infrastructure generally and in leisure in particular. We continue to call for a fair share of the funds that CWaC has in unallocated reserves. In addition to the £2m we want to see invested in local sports and leisure along the A56 we want CWaC to commit to building us a new purpose-built facility in Frodsham. After all much of the money for new leisure investment will come from redeveloping CWaC's land around the medical centre.

We see this investment as being in addition to improving Saltworks Farm (we could have a fantastic community centre there) to building new facilities for the Junior Footballers at the High School and developing the Sports and Social Club in Helsby. Why shouldn't we have the same high quality facilities that have been built elsewhere in the Borough? After all CWaC's leisure plans showed it was Frodsham's turn in 2015. So why are we waiting?

## Frodsham's fantastic summer reading challenge

Frodsham's youngsters broke all previous records with more than 200 children receiving certificates and medal in 4 ceremonies last week celebrating that they had read at least 6 books over the summer. 'We've supported this event for years,' said Lynn. Andrew commented: 'This is always my favourite event of the year. A huge thank you to Ian, Jenny and all the library staff as well as to our teenage volunteers who made this possible.' Let's see if next year can be even better.



Andrew Dawson  
07970 635629

[andrew.dawson@cheshirewestandchester.gov.uk](mailto:andrew.dawson@cheshirewestandchester.gov.uk)

@clrandrewdawson

Blog: [frodshamtories.blogspot.com](http://frodshamtories.blogspot.com)

Lynn Riley  
07800 869350

[lynn.riley@cheshirewestandchester.gov.uk](mailto:lynn.riley@cheshirewestandchester.gov.uk)

@mustbecwaced

Vimeo: Frodsham Conservatives

Cheshire West and Chester Council, HQ Building, 58 Nicholas Street, Chester CH1 2NP

# Land of Beds in rainbow dash for charity cash

**SLEEP specialists Land of Beds assembled a team of big-hearted employees from their Frodsham and Helsby showrooms to raise more than £1,000 for charity.**

Britain's 'Retail Family Business of the Year' were the proud headline sponsors of a 5K Colour Run, which was held at Pennington Flash on Sunday, 16 September.

Over a tonne of powder paint was thrown on the day – covering more than a thousand people who ran, jogged or walked the course.

Colour stations helmed by enthusiastic volunteers saw to it that

no-one was left out of the charity challenge, which will help finance specialist and palliative end of life care.

Team Land of Beds was 20-strong, with participants several shades of green, blue, pink, purple and orange by the time the three-mile run was completed.

Mike Murray, Managing Director at Land of Beds, said: "In addition

to sponsoring this year's run, we are hugely proud to have raised more than £1,100 for Wigan & Leigh Hospice thanks to the generosity of everyone who donated to Team Land of Beds.

'Bed Experts from our Church Street headquarters and Chester Road showroom took part, as well as my wife Caroline and our children George, nine, and Betsy, five.

"We are honoured to have partnered with Wigan Warriors

Community Foundation, who delivered a well-attended event that has raised thousands of pounds for families who are going through the toughest of times."

Now in its fourth year, this year's Colour Run was held in loving memory of Neil Rigby, who sadly lost his life at the event in 2017.

Donations to Lands of Beds' JustGiving page continue to be welcomed at [www.justgiving.com/fundraising/landofbedscolourrun](http://www.justgiving.com/fundraising/landofbedscolourrun)



- Lettings
- Management
- Property Investments

## Are you thinking of letting your property?

Cheshire Relocation can offer a complete service to landlords and guidance to anyone considering investing in residential property.

At Cheshire Relocation we don't sell properties, we just find tenants and manage properties... really well!

- ✓ Established for 30 years
- ✓ Buy-to-let specialists
- ✓ Unrivalled local knowledge
- ✓ Lettings only service

"We received a first class service without any pressure being put on us" - Mr & Mrs W

"First class service, First class communication, Happy Landlord and happy tenants" - Mr V



[www.cheshirerelocation.co.uk](http://www.cheshirerelocation.co.uk)

Tel. 01928 735455 | 15 High Street, Frodsham

## Wedding Fayre

at the Forest Hills Hotel

Sunday 7th October

12pm – 3pm

1.30pm Fashion Show by  
Ellen Thomas Bridal of Helsby

FREE entrance

### Exhibitors:

Acer Florist • Ellen Thomas Bridal Ltd • Beauty room Number 1  
Grand Designs Wedding and Events Leonidas Chester • Creative Prints  
Creative Cakes • Cheeky Ice Cream • Cheshire & Lancashire Wedding Cars  
Jewellery Sparkles • Faux Show Flowers • Phil Antrobus Photography  
Bobcat Magic • LnB Wedding Disco's • Lottes of Cake



Tel: 01928 735255

Best Western Forest Hills Hotel, Overton Hill,  
Frodsham WA6 6HH



[www.foresthillshotel.com](http://www.foresthillshotel.com)





land of beds®

**With over 70 beds  
on display, you'll  
be spoilt for choice!**

Leading North West independent retailer

Autumn  
**SALE**  
NOW ON



**£ Pay Monthly Options available - 0% interest-free credit**

**duntopillo**  
NATURAL COMFORT SINCE 1928

**HYPNOS**  
The most comfortable bed in the world

**Relyon**  
The best beds in the world

**Sealy**

**Silentnight**

**Sleepeeze**

**TEMPUR**

**NEVER  
BEATEN  
ON PRICE!**

**Frodsham Showroom (above Costa)**  
14 Church Street, Frodsham WA6 6QL

**Helsby Showroom**  
98 Chester Road, Helsby WA6 0DW

t: **0800 158 4842**  
w: **www.landofbeds.co.uk**

# Businessman's plan to save the Goods Shed

**FRODSHAM businessman Paddy Bleakley has submitted a proposal to Cheshire West and Chester Council to renovate Frodsham's Goods Shed.**

His vision is to transform the neglected building into a unique destination venue, packed with talent and attitude, with a continuously changing calendar of events and a mix of galleries, cafe and bar. He sees the building as an iconic landmark from a bygone era that has gone unused for too long.

Mr Bleakley is behind the successful transformation of Kash 22 on Frodsham's Church Street and has a proven track record of creating a thriving hospitality business, organising events, promoting local musicians and supporting the local community.

He sees the Goods Shed as an opportunity to stimulate the local economy, as seen around similar venues in Altrincham, Liverpool, Manchester and Cardiff and wants his home town to be a strong creative hub, not just a parking venue for commuters.

His proposal has been met with enthusiasm and support from Weaver Vale MP Mike Amesbury and Cheshire West and Chester (Frodsham Ward) councillors Lynn Riley and Andrew Dawson.

Frodsham Town Councillors Liam Jones and Caroline Ashton thoroughly endorse the plan and have offered to help in any way possible to see it succeed.

Since formally submitting the proposal, Mr Bleakley has met with CW&C representatives and is currently awaiting a decision. The council had however already applied for planning permission to demolish the building, despite 73 per cent of respondents to their own pre-application consultation objecting.

Mr Bleakley is not alone in feeling the demolition of a historical building in a prominent conservation area is morally, socially and environmentally wrong. If demolished an important part of the town's history will be lost forever.

The council's application (reference 18/03072/FUL) to demolish the building is currently in the formal consultation stage of planning and Mr Bleakley urges the local community to formally object to the proposal by contacting Cheshire West and Chester

Council's planning department.

The Goods Shed needs extensive restoration, the cost of which will be privately funded. Mr Bleakley will be speaking with local traders about the works required to create a socially and environmentally conscious business. It is hoped that the physical restoration of the building will also provide opportunities for young people living in and around Frodsham to develop new skills.

Frodsham Life has received

numerous letters and emails from people supporting the retention of the Goods Shed, several making the point that petitions and social media campaigns will carry no weight in the planning process and that what is needed are formal objections to the planning department at <https://pa.cheshirewestandchester.gov.uk/online-applications/applicationDetails.do?activeTab=neighbourComments&keyVal=PD19VUTEH4A00>



## Advice for parents of teenagers

PARENTS of teenagers in Frodsham are being invited to attend a parenting course at Main Street Church.

The seven week course – with a lengthy break for Christmas – is entitled "Time Out for Parents – The Teenage Years" and starts on Thursday, November 8 at 8pm.

Any parent or carer of teenagers in the Frodsham area can attend the free sessions when help and advice on building strong relationships with teenager children and enjoying family life will be available.

A spokesperson for the church said: "We know that being a parent can be both rewarding and challenging. Our courses are here to support you and to help you build a strong and secure relationship. There's something very special about meeting other mums and dads on one of our courses... the benefits of sharing ideas and experiences with other parents can last a lifetime."

More information can be obtained at [www.careforthefamily.org.uk](http://www.careforthefamily.org.uk) or from Ruth at [parenting@mscc.org](mailto:parenting@mscc.org) or Paul on 01928 735589. It is advisable to register in advance if possible.

Anyone doubtful about whether the course is for them can attend a couple of sessions and then decide what they think.



## Schools investigative reporters quiz MP

MEMBERS of Frodsham CE Primary School's Newspaper Club welcomed local MP Mike Amesbury to be interviewed for their award winning school paper.

Investigative reporters from the club quizzed Mr Amesbury on various subjects including: Why did he want to become a politician? What would he do if he were Prime Minister and who were the most famous people he had met?

Pupils enjoyed the opportunity to speak to him and one said "I thought Mr Amesbury was good at answering our questions and I enjoyed interviewing him."

A group of children from years 4, 5 and 6 meet each week, in their own time, to produce their own school newspaper. They publish an edition each term which is packed with interesting school and local news articles, as well as fun information and activities for the

children.

Mrs Gaynor Gardiner, who runs the club said "We were grateful Mr Amesbury took the time to come and visit us and I was impressed

with our children's interesting questions for him. We'll have to wait until the next edition of 'FSN' (Frodsham School News) to find out his answers though!"



# Town Council planners object to Good Shed demolition

**FIFTEEN members of the public turned up for a meeting of Frodsham Town Council's planning committee when CW&C's application to demolish the Goods Shed was on the agenda.**

Main points made by the residents were that the Goods Shed was a heritage asset that should be retained, better alternatives were available for providing additional parking at the station, a park and ride scheme would be more sustainable and that a business

proposal for the building was in the public domain and should be considered.

In addition, CW&C's own consultation had shown that 73 per cent of respondents were opposed to demolition.

After considering the comments,

the committee voted to object to the demolition – with councillors Caroline Ashton, Donna Critchley, Liam Jones and Adam Wordsworth in favour and Cllr Lord Frank Pennington abstaining.

The committee then voted to object to CW&C's proposal to extend temporary planning consent for a household waste site in Church Street, Frodsham, for another five years and instead

support a one year extension to allow CW&C time to find an alternative site.

Main reasons for the objection were that the existing waste site is unsuitable for use and that if an alternative site could be found – possibly low-grade land in the Green Belt – the existing site could be converted to car parking allowing retention of the Goods Shed.

## MP adds his voice to campaign

WEAVER Vale MP Mike Amesbury added his voice to the Goods Shed campaign when he lodged a formal objection to plans to demolish the building.

He suggested the building should "continue to serve the local community" as it has done in a variety of ways over the years.

Mr Amesbury said: "This is a part of Frodsham's heritage and I want to see it brought back into use for the wider community.

"It's an issue which I know is close to the heart of many of my constituents and I'd urge planners to think again about these proposals."



## Councillor resigns

A VACANCY has been declared on Frodsham Town Council following the resignation of Cllr Rob Holt.

The Lakes Ward councillor has resigned because he is leaving the area.

If any 10 electors from the ward

submit a written request, an election will be held but if no such request is made the vacancy can be filled by the Town Council.

But whoever is elected would only serve until next May when the next council elections are held.

## Volunteers welcome for cemetery clean-up

MEMBERS of Kingsley Parish Council are planning a two-day tidy-up session at the cemetery at St John's Church on Saturday and Sunday, October 6-7.

The idea is to make sure the cemetery is looking its best to commemorate 100 years since the end of World War 1 the following month.

Volunteer helpers will be welcome to carry out work such as weeding and pruning plant

around memorials, litter picking and general tidying and cleaning of memorials.

Rubbish bags and some equipment will be provided, but if volunteers would like to provide their own equipment this would also be useful.

The council will remove rubbish from the site, but volunteers will need gloves and suitable clothing and footwear.

## Main Street parking plan revealed

CHESHIRE West and Chester Council has published its proposals for parking restrictions in Main Street, Frodsham – and anyone who wants to comment on them must do so by October 12.

The plan is to introduce a two-hour waiting limit on parts of Main Street, with an exemption for residents who are permit holders.

CW&C says the aim is to give priority to short-stay users of a core retail area and prevent all-day commuter parking.

An order is proposed which will introduce designated parking places operating between 8am and 6pm Monday to Wednesday and Friday to Saturday on the north side of Main Street and between 8am and 6pm on Monday to Saturday on the south side.

Vehicles displaying valid residents' parking permits can be left in the parking place for an unlimited time but other vehicles can be left for only two hours.

Objections or other representations must be sent to Keiran Collins, Traffic Commissioner, Cheshire West and Chester Council, Highways Office, Guilden Sutton Lane, Guilden Sutton, Chester, CHG3 7EX by October 12 and the grounds of objection must be made.

A detailed plan showing the location of the parking places can be seen at Frodsham Town Council's office at Castle Park between 9am and 4.30pm and are also on the council's website, www.frodsham.gov.uk



**Commercial**

**Commercial Property**

**Litigation**

**Employment**

**Wills**

**Trusts**

**Probate**

**Personal Injury**

**Conveyancing**

**Crime**

**Family & Divorce**

**01925 231000**

**info@fdrlaw.co.uk**

**Warrington**

**Stockton Heath**

**Frodsham**

**www.fdrlaw.co.uk**





# It's 'strictly' ballroom for Orlagh and Daniel

**IT'S "strictly" ballroom for Frodsham schoolgirl Orlagh Daly and her dancing partner Daniel Evans.**

Orlagh, aged 11 and Daniel, aged 12, are set to take part in a number of competitions across the North West over the next few months.

The pair both have a passion for ballroom dancing and Latin but they also do ballet, tap and modern dance.

They train at Stuart's Dance School at Warrington twice a week and are also training in Liverpool

with dance teacher Paul Taylor – father of UK and British champion Kyle Taylor.

The problem they now face is the cost of special clothing, travel, training etc., so they are looking for sponsors to help them on their journey.

Anyone who wants to sponsor the young couple can call Daniel's mother, Nicola on 07855 156737.



## Manor House pupils add their voices to choir

PUPILS in Frodsham Manor House Primary School's Shakespeare Class – Year 5 – are in the process of adding their voices to a 500-strong children's choir.

They are rehearsing for a project with Chester theatre director Matt Baker and the city's Theatre in the Quarter entitled "Walk My

Journey."

The project consists of learning about the journeys, hopes and dreams of young refugees and learning about the Chester City of Sanctuary, which aims to make the city a place of safety for all, offering sanctuary to people fleeing violence and persecution.

Two songs have been written to teach children about those seeking refuge and how they can be made to feel safe.

These will be incorporated into a short film in October and given

a live performance in Cheshire during November.

The whole school will be learning more about the project as part of One World Week at the end of October.



# MP hosts pupils on visit to House of Commons

**LOCAL MP Mike Amesbury hosted pupils from Helsby High School for a visit to the House of Commons while they were on a tour of London as part of their studies.**

A group of 51 Year 12 students headed to the capital for two days as part of their business, economics, history, politics and media courses.

As well as Parliament, they also visited places of interest such as The Bank of England, Hampton Court Palace and The Supreme Court. The purpose of the visit was to give students an insight

into historical, political, legal and economic affairs, and to help them to think about future careers and further education.

During their visit to the Commons they spoke with the MP for Weaver Vale where they discussed some of the big issues facing young people in Britain today.

Eve Dougherty, teacher in charge

of business and economics at Helsby High, said: "Although Mike has visited our school a number of times, it was useful for students to see him in his working environment and appreciate his busy and diverse day to day activities."

One of the students, Heather Martindale, who studies A Level History, Politics and Economics, commented; "It was refreshing to see an MP so engaged with young people and happy to answer

questions."

Mike – who is a backer of plans to lower the voting age to 16 – added: "One of the things I'm always impressed with when I meet young people from Weaver Vale is how politically engaged they are."

"Young people today care about the country's future, they're full of ideas and they want to be active participants in democracy, I think that's fantastic to see."



## The Knoll Patient Participation Group (Knoll PPG)

### HEALTH & WELLBEING SERVICES FOR YOU

The Knoll PPG, supported by the Knoll Surgery, is holding an open day on **Thursday 15<sup>th</sup> November 2018**, for all patients and carers.

The aim is to give you the opportunity to find out about a range of local services that may assist you and improve your health and wellbeing. You can learn more about the Cheshire Care Hub which shows patients and carers how to find the various care services available.

The organisations being invited include:-

Making Space	Will to Work	L.I.F.T.S Service
Mind	Carers Trust	Nordic Walking
Brio	CAB	OPAL
CWAC	Library Services	Wellbeing Coordinator
Weaver Vale Housing Trust		

Why not pop in to the Princeway Health Centre at a time convenient to you between 9 am and 4 pm and find out how these groups may be able to help you as a patient or a carer.

We look forward to seeing you on **Thursday 15<sup>th</sup> November**.

Members of the National Association for Patient Participation  
Princeway Health Centre, 2 Princeway, Frodsham, Cheshire WA6 6RX  
Telephone 01928 733249 [www.theknollsurgery.co.uk](http://www.theknollsurgery.co.uk)

**FROM  
£15**

**twentyfour  
seven**  
design & print ltd

**GET ANY CUSTOM IMAGE PRINTED ONTO...**

ACRYLIC

GLASS

DIBOND

\*We can also print onto a wide selection of other materials.

**QUALITY PRINTERS • EXCELLENT SERVICE • QUICK TURNAROUND**

For all enquiries please contact us on:

**01925 240 247**

[info@247print.net](mailto:info@247print.net) [www.247print.net](http://www.247print.net)

## EXCHANGE YOUR GOLD AND SILVER FOR INSTANT CASH



All items of jewellery accepted

Did you know...?

We accept silver jewellery, cutlery, tea sets, spoons, cigarette cases, candlesticks, trophies, trays, medals, coins and pocket watches.

**ROLEX WATCHES WANTED!  
ANY CONDITION**

Open: Tuesday-Saturday: 10am - 5.30pm

1 London Road, Stockton Heath  
(First floor entrance on Fairfield Road)

07544 486 621



**GOLD & SILVER  
BULLION DEALER**



**Chartered Accountants and Management Consultants**

**Flexible, Friendly, Affordable, Professional Service**

We offer a range of services for sole traders, partnerships and limited companies including:

- Company Start Ups
- Bookkeeping
- Payroll
- VAT Returns
- Accounts Preparation
- Self Assessment Tax Returns
- Corporation Tax Returns
- Auditing
- Charity & Grant Auditing

To discuss your requirements call Katy Davies on 07720052116

or e-mail: [k.davies@kpdservices.co.uk](mailto:k.davies@kpdservices.co.uk)

No charge for the initial consultation to discuss your requirements.

[www.kpdservices.co.uk](http://www.kpdservices.co.uk)



## HILLCREST RESIDENTIAL CARE HOME

High Quality Residential & Dementia Care

Hillcrest is a high quality Residential and Dementia care home situated on the outskirts of Frodsham. Nestling on the side of Frodsham Hill. It enjoys beautiful views across the Cheshire Plain.



We offer the very highest standards of care, and our aim is to help our residents enjoy life as fully as possible. We welcome prospective clients and their families for visits at any time, or phone in advance to arrange a conducted tour.

See our website for more info, or find us on Facebook for news & events  
Respite stays often available - please ask

Manley Road Frodsham WA6 6ES  
[www.hillcrestcarehome.com](http://www.hillcrestcarehome.com) Tel 01928 733615



## COMPLETE SECURITY SERVICE

of Frodsham  
EST 1983

Domestic & Commercial  
Intruder Alarms Installed to  
BS4737/DD243 STANDARD

- Specialists in Monitored Equipment
- City & Guilds Qualified Staff
- 24 Hour Emergency Service
- Award Winning Company

[www.cssalarmscheshire.co.uk](http://www.cssalarmscheshire.co.uk)

**01928 732549**

72A Townfield Lane, Frodsham



ssaib

131



There's no better time to join Helsby Golf Club...

- Offer for a limited time
- No joining fee • 5 and 7 day memberships

Why not try it? - Contact our secretary  
and quote ref FL October 18

**01928 722021**

Helsby Golf Club, Towers Lane, Helsby WA6 0JB  
[www.helsbygolfclub.org](http://www.helsbygolfclub.org)



**MUSIC@GALLERY1**

**MUSICAL EVENINGS AT  
CASTLE PARK ARTS  
CENTRE**

**Doors Open 7.30pm—Start 8.00pm  
(Bar Available)**

**October 13th.....The Whole Charade**  
**Karen Pfeiffer & Paul Walker**  
International Folk Duo  
(£8.00 per ticket)

**October 14th ..... Robin Nolan**  
International Guitarist—Gypsy Jazz  
(£15.00 per ticket)

**November 18th.....Gonzalo Bergara Quintet's**  
**'Django meets Piazzolla European Tour'**  
(£15 in advance £18 on the door)

Tickets are available from the Arts Centre.  
Call in or make a card payments over £15.00 by  
phone 01928 735832, or Reserve Tickets.  
Also available on Mobile: 07914794039

**To get your business  
on track and in  
the 'Pink' contact  
James Bryan on  
01925 631592**

# Photographic Society exhibit at Heritage Open Days

**SEPTEMBER was an interesting and indeed exciting month for Frodsham & District Photographic Society.**

One of the season's highlights was the Club's Exhibition of more than sixty prints at St Laurence Church, on Heritage Open Days.

The Society was particularly pleased to support this event and it was gratifying that there were so many visitors – particularly interested in ascending the tower!

Members will be photographing in and around the church in October with a view to mounting a display next year.

Also in October there is a Presentation on the 8th by Sue Berry- 'The Feelings Beneath the Surface' - while Howard Barlow on the 29th talks about his career as a photojournalist.

Remember that for a small amount you can attend a Monday meeting at Castle Park Art Centre if there is a talk about a subject in which you are interested. You will be very welcome.

Lancashire and Cheshire Photographic Union is the overarching body supporting clubs. Miriam Manners and Peter Edwards are putting together prints to enter one of their Competitions. News next month on success!

Frodsham Town Council has generously given a grant to support the purchase of a new laptop which is very much appreciated.

[www.frodsham.photos](http://www.frodsham.photos)



*Ian Stanley - St. Laurence's Church.*



*Miriam Manners - Seeds of Time.*



*Brian Lunt - Ice Jet.*



*Lynda Haney - Perch Rock Lighthouse.*



*Nicky Higgins - Swanage Pier.*



*Lynda Haney - Pheasant in the Snow.*

# List of local roads to have 20mph speed limits

**CHESHIRE West and Chester Council has published the list of Frodsham roads on which it proposes to impose 20mph speed limits.**

They have not published the cost – but Frodsham councillor Andrew Dawson believes it will be more than £25,000.

Residents were given until September 28 to comment on the proposals, which means that many people – particularly those without internet access – will not know about them until it is too late to comment anyway.

Cllr Dawson says most residential roads will be signed as 20mph roads – and he accepts that most are not controversial.

But data collected by CWaC itself shows that most drivers don't travel at more than 20mph anyway.

"Changing the speed limit merely reflects what most of us are already doing in any event," he said.

But he queries the inclusion on the list of Howey Lane, which is already subject to traffic calming.

He also draws attention to short lengths of road – such as Foxglove Close, off Fluin Lane – where it is doubtful if it possible to reach 20mph anyway.

Then there are roads like Top Road, Overton Drive and Newlands Close that are not part of the schemes.

Cllr Dawson adds: "I don't have the exact figures for how much these schemes will cost. But I would suggest at least around £25,000 or even more.

"So if you had £25,000 to spend on road safety schemes in Frodsham – would you choose putting your money into 20mph signs on roads where those speeds are not exceeded or something else?"

"I know many people want to see a pelican crossing on Bridge Lane by the Chinese Delight. That would cost a little more than £25,000. Or what about spending that money on putting in a pavement on Manley Road around Newlands Close?"

"Would you put the £25,000 on bringing a quality CCTV system to Frodsham?"

CWaC has divided Frodsham into four areas for the purposes of making Traffic Regulation Orders (TROs) to allow the 20mph limits to be imposed. Anyone wishing to comment should quote the appropriate TRO number. The list is as follows:

## Frodsham East - TRO 2121

Langdale Way – from its junction with Fluin Lane for its full extents  
Penrith Close – from its junction with Langdale Way for its full extents  
Thirlmere Close – from its junction with Langdale Way for its full extents  
Ennerdale Drive – from its junction with Langdale Way to its junction with Grasmere Road  
Coniston Drive – from its junction with Grasmere Road to its junction with Keswick Drive  
Keswick Drive – from its junction with Grasmere Road to its junction with Langdale Way  
Silverdale Close – from its junction

with Grasmere Road for its full extents

Borrowdale Close – from its junction with Grasmere Road for its full extents

Matterdale Close – from its junction with Grasmere Road for its full extents

Buttermere Close – from its junction with Grasmere Road for its full extents

Townfield Lane – from its junction with Vicarage Lane to its junction with Grasmere Road

Fairways – from its junction with Townfield Lane to its junction with Doric Avenue

Bickerton Avenue – from its junction with Townfield Lane for its full extents

Doric Avenue – from its junction with Townfield Lane to its junction with Bradley Lane

Pollard Avenue – from its junction with Townfield Lane for its full extents

Rosewood Avenue – from its junction with Fairways for its full extents

Woodside Avenue – from its junction with Fairways for its full extents

Hillsboro Avenue – from its junction with Townfield Lane for its full extents

Ranulph Court – from its junction with Doric Avenue for its full extents

Greenside Avenue – from its junction with Fairways for its full extents

Clover Avenue – from its junction with Greenside Avenue to its junction with Doric Avenue

Lansdowne – from its junction with Bradley Lane for its full extents

Springbourne – from its junction with Lansdowne for its full extents

Grassmere Road – from its junction with Langdale Way to its junction with Townfield Lane



Manor Farm Court – from its junction with Langdale Way for its full extents

## Frodsham North - TRO 2122

Marsh Lane – from its junction with Main Street for its full extents

Maori Drive – from its junction with Marsh Lane for its full extents

Meadowside – from its junction with Maori Drive for its full extents

Brookside Road – from its junction with Marsh Lane for its full extents

St Hilda's Drive – from its junction with High Street to its junction with Hayes Crescent

Belvedere Close – from its junction with St Hilda's Drive for its full extents

Chapelfields – from its junction with Main Road for its full extents

Ashton Drive – from its junction with St Hilda's Drive to its junction with Ship Street

Clifton Crescent – from its junction with Ashton Drive for its full extents

Pennington Close – from its junction with Waterside Drive for its full extents

Saltworks Close – from its junction with Waterside Drive for its full extents

Woolley Close – from its junction with Waterside Drive for its full extents

Watersedge – from its junction with Waterside Drive for its full extents

Volunteer Street – from its junction with Bridge Lane for its full extents

Ship Street – from its junction with Bridge Lane to its junction with Waterside Drive

Hawthorne Road – from its junction with Ship Street for its full extents

Rodgers Close – from its junction with Hawthorne Road for its full extents

St Lukes Way – from its junction with Ship Street for its full extents

Wayford Close – from its junction with Ship Street for its full extents

Wayford Mews – from its junction with Wayford Close for its full extents

Hayes Crescent – from its junction with Ship Street to its junction with St Hilda's Drive

Ashton Close – from its junction with Ashton Drive for its full extents

Riversdale – from its junction with Ashton Drive for its full extents

Overton Close – from its junction with Ashton Drive for its full extents

Overton Green – from its junction with Overton Close for its full extents

Marshgate Place – from its junction with Waterside Drive for its full extents

Waterside Drive – from its junction with Ship Street for its full extents

Francis Road – from its junction with Volunteer Street for its full extents

Weaver Road – from its junction with Volunteer Street for its full extents

Weaver Crescent – from its junction with Weaver Road to its junction with Weaver Road

Coronation Drive – from its junction with Weaver Road for its full extents

Quayside – from its junction with the Quay for its full extents

The Quay – from its junction with Bridge Lane to its junction with Quayside



Plumpstons Lane – from its junction with Ship Street to its junction with High Street

Manor Road – from its junction with Clifton Crescent for its full extents

## Overton, Frodsham - TRO 2123

Howey Lane – from its junction with Chester Road for its full extents

Church Road – from its junction with Howey Lane for its full extents

Hillfield – from its junction with Howey Lane for its full extents

Middle Walk – from its junction with Bellemonte Road for its full extents

Pinnmill Close – from its junction with Howey Lane for its full extents

Fieldway – from its junction with Church Road for its full extents

School Lane – from its junction with Hillside Road for its full extents

Hillside Road – from its junction with Bellemonte Road for its full extents

Elm Rise – from its junction with Hillside Road for its full extents

Arran Drive – from its junction with Elm Rise for its full extents

Hillview Close – from its junction with Hillside Road for its full extents

Bellemonte Road – from its junction with Howey Lane to a point 22 metres South of Middle Walk

Howey Rise – from its junction with Howey Lane for its full extents

Netherton Drive – from its junction with Howey Lane for its full extents

Carriage Drive – from its junction with Howey Lane for its full extents

Orchard Close – from its junction with Carriage Drive for its full extents

Overton Close – from its junction with Carriage Drive for its full extents

Overton Green – from its junction with Overton Close for its full extents

## Frodsham Town Centre - TRO 2124

Sandfields – from its junction with Church Street for its full extents

Blue Hatch – from its junction with Fluin Lane for its full extents

Lime Avenue – from its junction with Fluin Lane for its full extents

The Willows – from its junction with Fluin Lane for its full extents

Beech Avenue – from its junction with Lime Avenue for its full extents

London Road – from its junction with Church Street for its full extents

Whitehall Place – from its junction with London Road for its full extents

Withy Close – from its junction with Whitehall Place for its full extents

Churchfield Road – from its junction with Church Street to its junction with Froda Avenue

Froda Avenue – from its junction with Churchfield Road for its full extents

St Lawrence Road – from its junction with Churchfield Road for its full extents

Cobal Court – from its junction with Churchfield Road for its full extents

Ashlands – from its junction with Red Lane for its full extents

Red Lane – from its junction with Ashlands for its full extents

# Reader's Letters

Please send Reader's Letters to: Frodsham Life, New Media Centre, Old Road, Warrington WA4 1AT  
or email: [info@frodshamlife.co.uk](mailto:info@frodshamlife.co.uk)

## Another vision for the Goods Shed

Peter Vickery, Netherton Drive, Frodsham

In previous editions, we have heard two visions of the future regarding the Goods Shed, one based on the imminent demise of the planet as we are engulfed by climate change and the other on a desire not to waste a penny of public money on what might be a lost cause. I would like to put another point of view.

What matters to me, as someone who has watched my family grow up in Frodsham and who cares deeply about the place, is what we are passing onto the next generation. CWAC, it would seem, see Frodsham as a place where commuters park their cars and head off to work in Chester, Warrington, Liverpool or Manchester and see an opportunity to make them pay for the privilege.

That is not how Frodsham residents see their town. It is where they meet, shop, eat, drink and take exercise. Visitors from places nearby come to enjoy the market each week. And while doing all of this they take to social media and complain gloriously about the bad parking, dog poo, bad behaviour and all the things that make Frodsham such a great place to live.

Ask them and they will tell you they would like a job locally, have a wider range of independent shops, more variety in eating places and better equipped green spaces across the town. They are proud of Frodsham's architectural

heritage and they would prefer not to have to use their cars if only the buses were timed to suit their needs and the footpaths and cycleways were better connected and maintained.

Look at what is happening across the developed world and you will see that high streets like ours are changing rapidly and there is nothing we can do to stop it. The banks will not return to the main street and the estate agents will follow them out. We have become a nation of on-line shoppers. What survives in successful towns are retail and service providers who give people a better reason to visit than just to buy something. Those who offer an experience, whatever it is, that makes the trip worthwhile will prosper.

People don't just visit coffee shops for a drink, they communicate and work. But another big change is happening. Workplaces are no longer factory floors or vast open plan offices. They are front rooms, garages or local business hubs where people can pursue their careers without spending many hours each week in traffic.

This is where the Goods Shed is such a golden opportunity for CWAC. People arriving by train in Frodsham currently see a refurbished station, now home to two thriving businesses. It is their first view of rural Cheshire and the lovely countryside comes as a

welcome change to the industrial landscapes left behind minutes earlier. Do we want to see the Goods Shed on the other side of the track replaced by yet more asphalt?

CWAC has identified Frodsham as a Key Service Centre in its Local Plan. The town needs business premises for new and expanding local businesses to provide services. Removing a mature existing building that has both a previous commercial history and considerable potential makes no sense. Car parking fees will bring no revenue to Frodsham residents. In contrast, the Goods Shed could be a hub for many things, retail, commerce, entertainment or leisure, maybe a mix of them all. It would sustain upwards of 50 jobs and give people added reason to come and enjoy Frodsham.

CWAC are currently responsible for this building. It makes no sense, apart from a narrow short-term financial perspective, to demolish it. It is clear to anyone that has given some thought to the matter that providing fifteen or so additional parking spaces will not resolve the traffic problems faced by Frodsham residents and visitors.

So, come on CWAC, get some imagination into your thinking. Frodsham is not just a dormitory town for surrounding urban centres, we are real people with a lovely town – help us look after it!

## Positive reasons for preservation

Your September edition includes a letter from DI Thomas, Frodsham, in favour of demolishing the Goods Shed. He is, of course, entitled to his opinion although it is not shared by nearly 80 per cent of the people who responded to the consultation.

I am interested to know what are DI Thomas's plans for protecting:

\*the bats known to roost there in April

\*the sparrows (on the Red List of birds of conservation concern) currently nesting there.

\*the magnificent False Acacias (Robinia Pseudoacacias) and winter flowering cherries (Prunus Autumnalis) so lovingly planted by Frodsham Tree Group. There are also Mountain Ash trees, all of which play their part in cleaning the atmosphere; absorbing carbon dioxide and producing oxygen and (unlike cars) helping

## PD Fewster, Sandfields, Frodsham

us to restrict our carbon footprint. Trees also create an ecosystem and provide a habitat for birds and insects.

\*The ears of the Sandfield residents if there is no "baffle" to protect them from the noise of passing trains.

"In addition to any interesting features or potential uses of the building, these are all positive reasons against demolition."



**CLASSIFIED  
FREEPHONE  
0800 955 5247**

### ACCOUNTANCY & SAGE TRAINING

**WHY TRY TO BE A PAYE EXPERT?**  
Watkinson Black can provide a cost effective payroll service, releasing you to concentrate on your business. **For further details please phone: 01925 413210 or e-mail: [info@warringtonaccountants.co.uk](mailto:info@warringtonaccountants.co.uk)** (5/1)

### CARPET CLEANING

**A1 STAINBUSTERS.** A Warrington company cleaning carpets, hard floors, Upholstery (Leather + fabric) and curtains in situ. FREE quotes for domestic and commercial. Approved carpet cleaners for Hancock and Woods for over 10 years. Call John on 01925 852088 or 07765 314080 (10/18)

**SIMPLY THE BEST CARPET CLEAN YOU** will ever have. Cleaners UK Ltd. Est 29 yrs. Have your carpets & sofas beautifully deep cleaned leaving them fresh smelling & colour restored. Latest & best methods. Dry/steam. Leather cleaning, oriental rug specialist. Professional, reliable & affordable. **For more info call Neil Riley on 01925 264989 or 07831 336060 [www.cleaners-uk.net](http://www.cleaners-uk.net)** (2/19)

### CHIROPODY

**MOBILE  
CHIROPODIST / PODIATRIST**

Miss Lesley Mathieson  
M.INST. ChP, L.Ch.

For the treatment of all foot  
conditions and orthotics

For home visits call 01928 733630  
Registered with the Health Professions Council (5/18)

### ELECTRICAL CONTRACTORS

**TRUST PROPERTY ELECTRICAL SERVICES.**  
NICEIC Part P Approved Contractor. All Electrical work undertaken. Inspection and testing and PAT testing. All work certified and guaranteed. **Call Tim on 07754409906 or 01925 601055** (5/1)

### HOME SERVICES

**ATLAS**  
Your friendly local independent  
pest controllers  
SUMMER SPECIALS:  
WASP CONTROL £49 INVASIVE BEE CONTROL £65  
Affordable, professional, guaranteed service.  
Fully insured, fixed prices - no surprises once on site!  
Discrete vehicles, no embarrassing signs  
**07999 487 925 / 01925 445 222**  
[www.atlas4u.co.uk](http://www.atlas4u.co.uk) (6/19)

### LADDERS

**MORE THAN LOFT LADDERS,** boarding, lighting, ladders, hatches, roof lining and insulation. Free written quotes. **Tel: 01925 388462.** (5/1)

### LOCAL EVENTS

**FLOWER FESTIVAL. 6TH / 7TH / 8TH**  
October 2018 at St John's the Evangelist Church Alvanley WA6 9DD. Theme 'Hymns for all Occasions'. Church open from 10am - 5pm each day. Light refreshments available. For further information Tel: 01928 724488 (10/18)

### MORTGAGES

**INDEPENDENT MORTGAGE ADVICE.**  
For local, impartial and professional advice on all aspects of mortgages contact **Darren Simpson at Amatus Financial Services 07708 975122 or 01925 399999** (5/1)

**Advertise in the  
Classifieds  
from as little as £6  
per month!**

**Call our friendly**

**team now on  
0800 955  
5247**



# YOUR CHOICE

## HOME IMPROVEMENTS

### FULL DESIGN & BUILD SERVICE

**0%**  
Finance  
Available  
subject to survey



**NO**  
Planning  
Permission  
Needed

## Garden Studios



- Useable room - 365 days
- Highly Insulated
- Fitted with all mod-cons
- Quick Installation



PERFECT FOR YOUR HOME OFFICE/GYM,  
MUSIC STUDIO OR SIMPLY EXTRA SPACE!



**SHOW HOMES REQUIRED  
CONTACT NOW!**



## Composite Decking



- Slip Resistant
- No Staining or Painting
- Hard Wearing
- Weatherproof



CALL FOR A **FREE** QUOTE  
**0161 643 7222**  
OR VISIT **YOUR-CHOICE.UK.COM**

Showroom Open **7 DAYS**  
590 Manchester Old Rd  
Middleton  
Manchester  
M24 4PW

**Checkatrade.com**